

## **Autry National Center**

### **Greater Griffith Park Neighborhood Council Planning, Zoning and Historic Preservation Committee, 3/12/08**

#### **I. Autry EIR Update**

- The Autry has enthusiastically participated in the public review process and has met or exceeded the City of Los Angeles' requirements

#### **II. A Beautiful New Treasure in Griffith Park**

- The project turns a "museum in a parking lot" into a "museum in the park"
- Restores green space to the front of the building, tucking parking from view
- Innovative shared parking program with the zoo during weekdays allows for even less surface parking on the South Lawn
- Brenda Levin, who recently completed the Griffith Observatory renovation, is the Design Architect. She is also a Los Feliz resident and committed to Griffith Park.
- The building will reflect Levin's inspiration from the colors and materials of the western landscape, the horizontal lines of the open spaces, the drama and verticality of the canyons

#### **III. The Right Plan**

- The creative design and responsible approach to this project has generated enthusiasm from individuals and the funding community, which to date has surpassed our expectations
- The Autry is committed to, and confident of, completion of this project
- The Heart of the West Campaign will generate \$185 MM, to cover the cost of the building, an endowment and operations
- The Autry's current lease with the City expires in 2038. The City does not provide any on-going subsidy to the Autry

#### **IV. The Autry's commitment to the Southwest Museum**

- The Southwest building and collection have been saved
- The Autry is continuing to repair and restore, spending over \$6million to date
- The Southwest is part of the Autry National Center and we intend to continue a very high level of support
- The Southwest Society was created with Councilman Huizar, and the Autry is preparing the Southwest Museum for its next generation use as a vibrant arts, cultural and educational center, including gallery spaces dedicated to showcasing the Southwest Collection

## AUTRY EIR and OUTREACH PROCESS, 2007, 2008

### PAST ACTIONS, prior to March 2008

- Notice of Preparation: May 14
- First Scoping Meeting: May 29
- Second Scoping Meeting: June 11
- Draft EIR Issued/Start of Public Review Period: August 16
- Rec. and Parks Public Meeting: September 18
- Original End Date of Public Comment Period: October 1 (45 day comment period)
- Public Comment Period Extended Through: October 18 (a 64 day comment)

### ADDITIONAL OPPORTUNITIES FOR INPUT

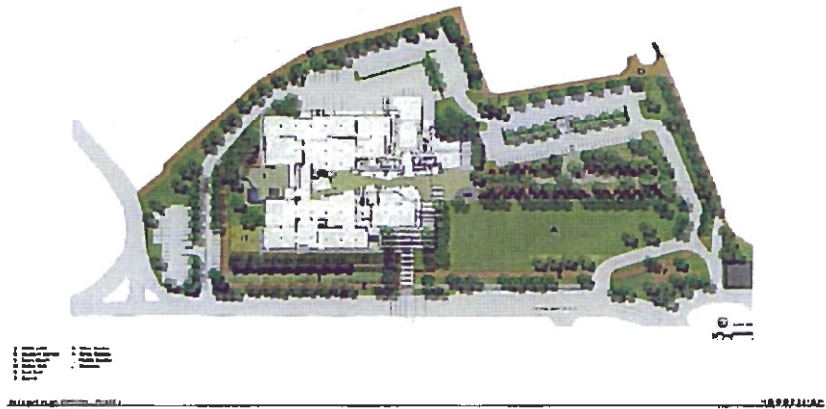
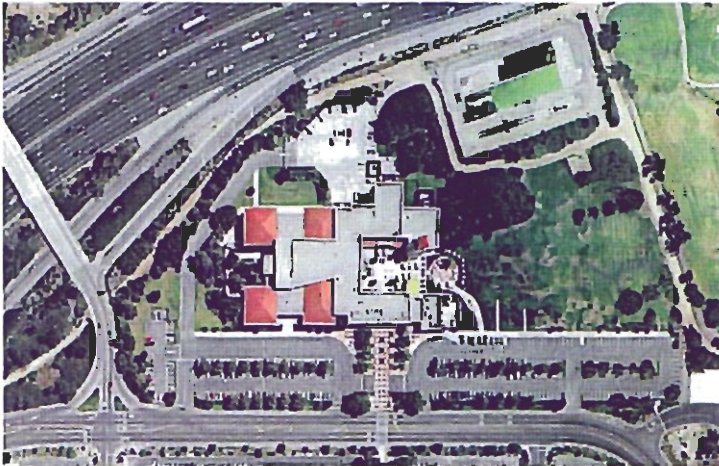
- Neighborhood Council presentations: Greater Griffith Park; Hollywood; Atwater, Silverlake
- Open House: February 10

### UPCOMING ACTIONS – in order of action, none scheduled until Final EIR is complete

- Hearing on Certification of EIR and Lease
- City Planning Hearing Officer Hearing on Conditional Use Permit
- City Planning Commission Hearing on CUP
- City Council approvals

Prepared as of March 12, 2008

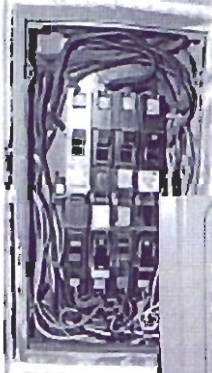
## A BEAUTIFUL NEW TREASURE IN GRIFFITH PARK And THE RIGHT PLAN



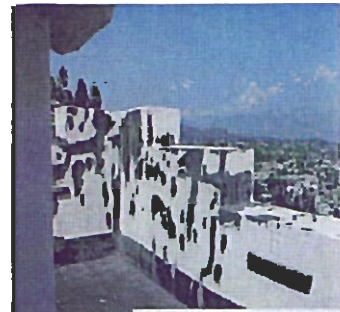
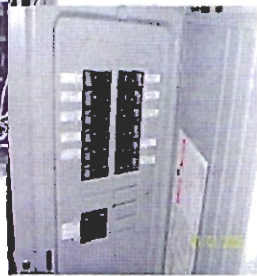
**From “a museum in a parking lot” to  
“a museum in a park”.  
Less surface parking on the South Lawn.**

# THE AUTRY'S COMMITMENT TO THE SOUTHWEST MUSEUM

- Saving the Buildings
- Saving the Collections



Replacing dangerous wiring



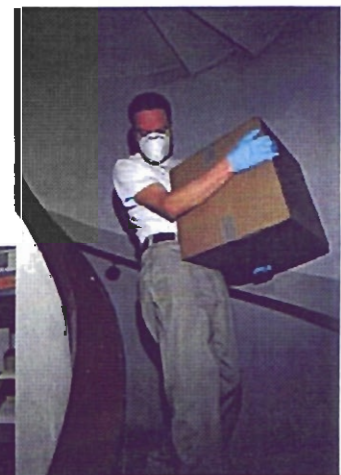
Waterproofing the building



Restoring the Casa de Adobe



Saving The Collection



# FORMATION OF THE SOUTHWEST SOCIETY WITH PARTNERS FROM THE LOCAL AND NATIVE AMERICAN COMMUNITY

